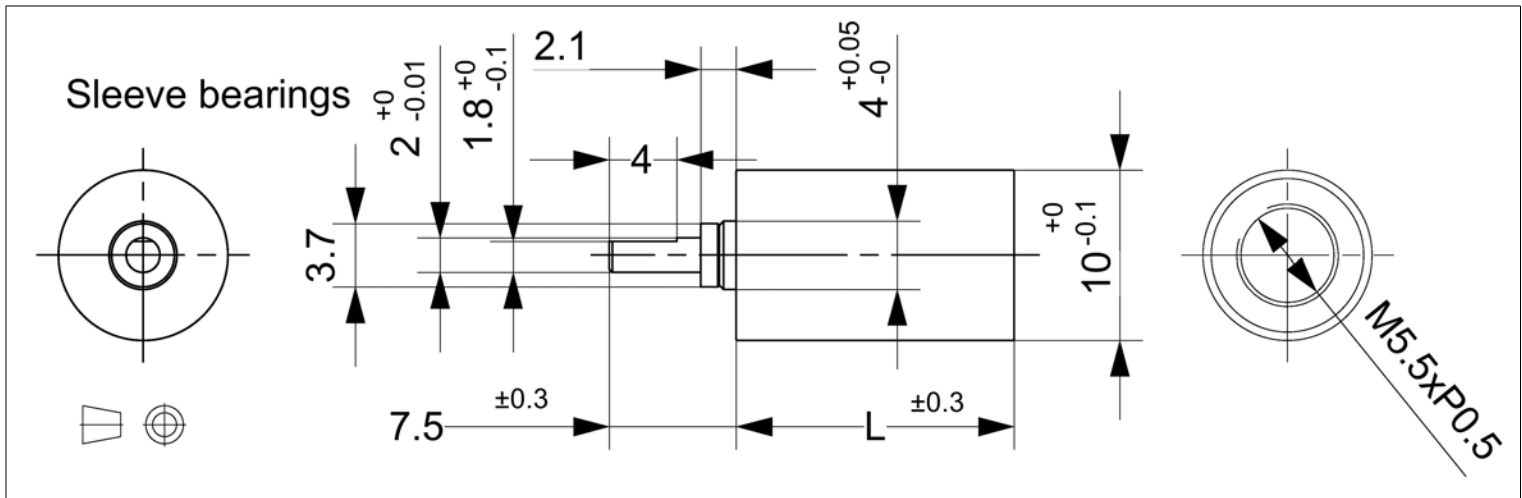


Planetary Gearbox - 10 mm Ø Metal



Value Series Exact Ratio Metal Gearboxes

Global Motion Products



Not to Scale - Dimensions in millimeters (mm)

Ratio	Efficiency %	Continuous Torque mNm	Continuous Torque oz-in	Length L mm	Mass grams	Direction of Rotation*	Order Part Number
4.00:1	85 %	5 mNm	0.7 oz-in	12.20	6.2	Same	P100004AS00
16.00:1	75 %	10 mNm	1.4 oz-in	15.30	7.2	Same	P100016AS00
64.00:1	65 %	29 mNm	4.2 oz-in	18.40	8.2	Same	P100064AS00
256.00:1	55 %	39 mNm	5.6 oz-in	21.50	10.2	Same	P100256AS00
1,024.00:1	45 %	49 mNm	6.9 oz-in	24.60	11.2	Same	P101024AS00
4,096.00:1	40 %	59 mNm	8.3 oz-in	27.70	13.2	Same	P104096AS00

Radial Load Rating	≤ 1.0 N	Radial Play	≤ 0.05 mm	Max Temperature Operating	60°C
Radial Load Distance	5 mm	Axial Play	≤ 0.20 mm	Min Temperature Operating	-10°C
Axial Load	≤ 2.0 N	Backlash	≤ 3.0 °	Relative Humidity Operating	20% to 85%
Press Fit Force - Max	≤ 4.9 N	Bearing	Sleeve	Characteristics and Specifications at 22°C	

The P10 x x x MS00 Series is available as a complete gearmotor with 2 Phase Bipolar Permanent Magnet 18° Stepper Motor, Coreless DC Motors w/optional 2 Channel low Current /low Voltage Encoder 12 PPR per channel, and conventional low cost iron core dc motors, and BLDC Motors.

Options: Permanent Magnet Two Phase Bipolar Stepper Motors. Coreless and Iron Core DC Motors. 2 Channel Magnetic Encoders including low power versions.

* Rotational Sense of Gearbox Output Shaft to Motor Shaft

Global Motion Products
 Distributed by:
 Precision Motion Distributors: (925) 803-9565
 Technical Support: (760) 451-2723
<http://www.gmpwebsite.com> Email: info@gmpwebsite.com

Manufactured under a Certified ISO
 9001 Quality System and ISO 14001
 Environmental Management System.

RoHS Compliant

B - July 2012

Specifications Subject to change without notice