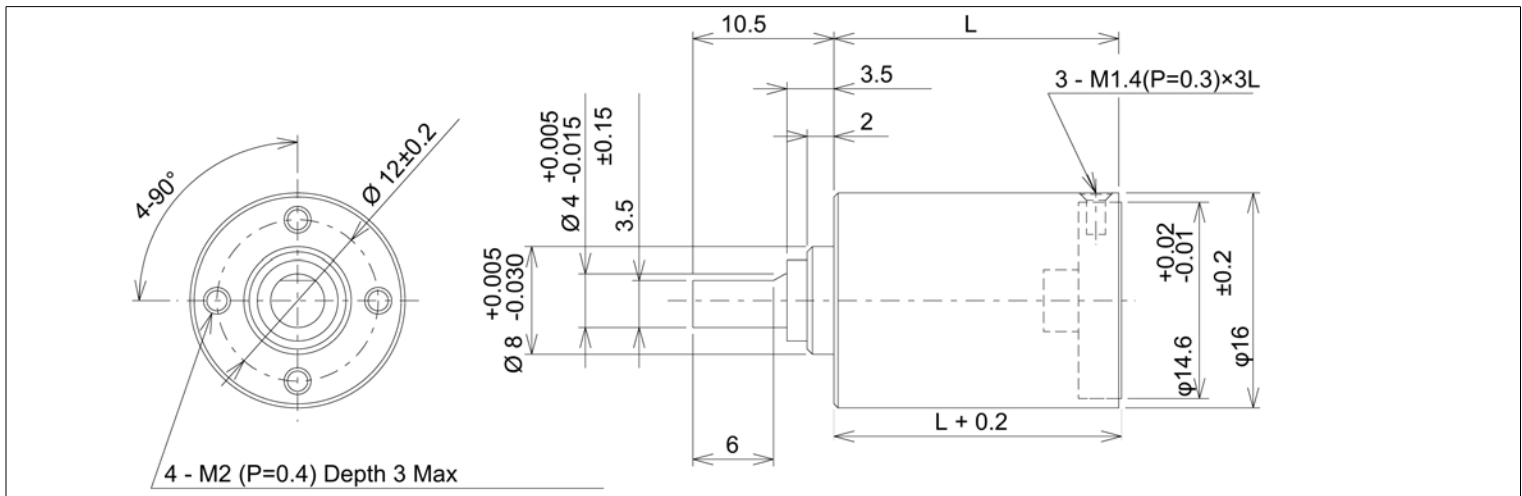


# Planetary Gearbox - 16 mm Ø



Global Motion Products

P16 •••• MS00 - Sintered Metal Technology



Not to Scale - Dimensions in millimeters (mm)

Ratio	Efficiency %	Continuous Torque Nm	Continuous Torque oz-in	Length L mm	Mass grams	Direction of Rotation*	Order Part Number
19.22:1	66 %	0.29 Nm	41.6 oz-in	18.00	19.0	Same	P160019MS00
23.68:1	66 %	0.29 Nm	41.6 oz-in	18.00	19.0	Same	P160024MS00
29.16:1	53 %	0.29 Nm	41.6 oz-in	18.00	19.0	Same	P160029MS00
84.29:1	53 %	0.39 Nm	55.5 oz-in	21.60	22.5	Same	P160084MS00
127.86:1	53 %	0.39 Nm	55.5 oz-in	21.60	22.5	Same	P160128MS00
103.81:1	53 %	0.39 Nm	55.5 oz-in	21.60	22.5	Same	P160104MS00
157.46:1	53 %	0.39 Nm	55.5 oz-in	21.60	22.5	Same	P160157MS00
369.59:1	43 %	0.49 Nm	69.4 oz-in	25.20	26.0	Same	P160370MS00
455.19:1	43 %	0.49 Nm	69.4 oz-in	25.20	26.0	Same	P160455MS00
560.06:1	43 %	0.49 Nm	69.4 oz-in	25.20	26.0	Same	P160560MS00
690.42:1	43 %	0.49 Nm	69.4 oz-in	25.20	26.0	Same	P160690MS00
850.31:1	43 %	0.49 Nm	69.4 oz-in	25.20	26.0	Same	P160850MS00

Radial Load Rating	≤ 4.9 N	Radial Play	≤ 0.10 mm	Max Temperature Operating	60°C
Radial Load Distance	10 mm	Axial Play	≤ 0.25 mm	Min Temperature Operating	-10°C
Axial Load	≤ 4.9 N	Backlash	≤ 3.0 °	Relative Humidity Operating	20% to 85%
Press Fit Force - Max	≤ 15.0 N	Bearing	Sleeve	Characteristics and Specifications at 22°C	

The P16 o o o o MS00 Series is available as a complete gearmotor with Coreless DC Motors w/optional 3 Channel Magnetic and 2 channel Optical Encoders. Lower cost Iron Core DC Motors or BLDC Motors are also available. GMP offers gearboxes and gearmotors from 6 mm diameter to 90 mm.

Options: Coreless DC Motors with optional 3 Channel Line Driven and Complementary Output Encoders. Low Cost Iron Core DC Motors. Low Backlash version. Ball Bearings. Gear and Shaft Material alternatives.

\* Rotational Sense of Gearbox Output Shaft to Motor Shaft

Global Motion Products  
 Distributed by:  
 Precision Motion Distributors: (925) 803-9565  
 Technical Support: (760) 451-2723  
<http://www.gmpwebsite.com> Email: [info@gmpwebsite.com](mailto:info@gmpwebsite.com)

Manufactured under a  
 Certified ISO 9001 Quality  
 System

RoHS Compliant

A - November 2011

Specifications Subject to change without notice