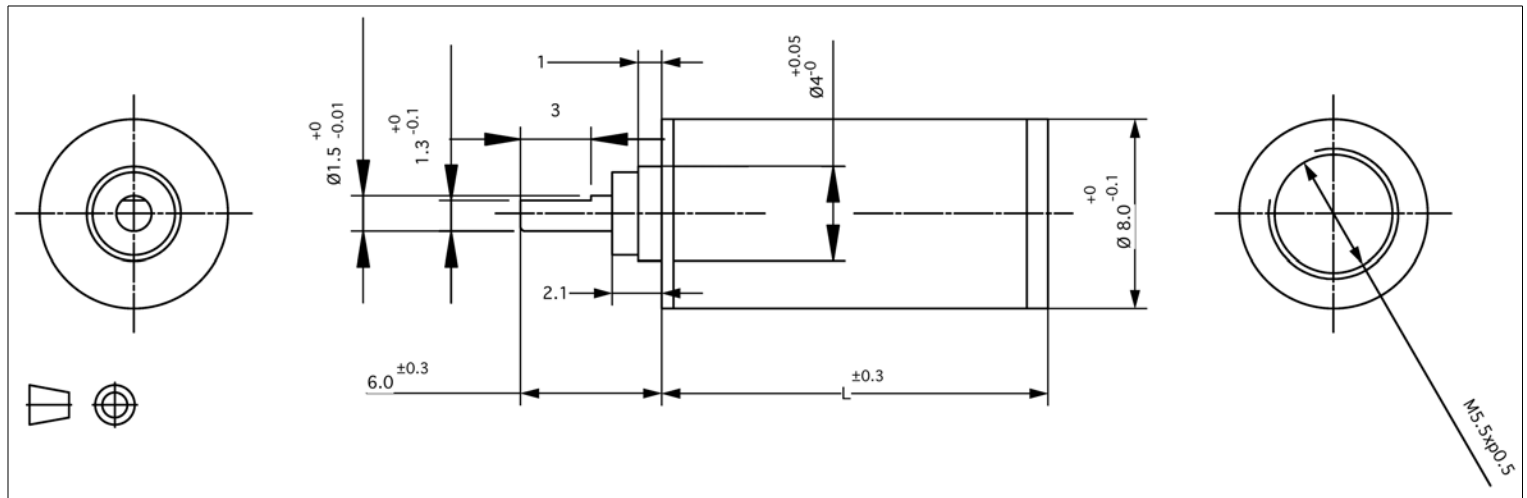


# Planetary Gearbox - 8 mm Ø



## Value Series Exact Ratio Metal Gearboxes

Global Motion Products



Not to Scale - Dimensions in millimeters (mm)

Ratio	Efficiency %	Continuous Torque mNm	Continuous Torque oz-in	Length L mm	Mass grams	Direction of Rotation*	Order Part Number
4.00:1	85 %	5 mNm	0.7 oz-in	11.60	2.9	Same	P080004AS00
16.00:1	75 %	10 mNm	1.4 oz-in	14.30	3.8	Same	P080016AS00
64.00:1	65 %	20 mNm	2.8 oz-in	17.00	4.6	Same	P080064AS00
256.00:1	55 %	29 mNm	4.2 oz-in	19.70	5.4	Same	P080256AS00
1,024.00:1	45 %	34 mNm	4.9 oz-in	22.40	6.3	Same	P081024AS00
4,096.00:1	40 %	39 mNm	5.6 oz-in	25.10	7.1	Same	P084096AS00

Radial Load Rating	≤ 1.0 N	Radial Play	≤ 0.05 mm	Max Temperature Operating	60°C
Radial Load Distance	1 mm	Axial Play	≤ 0.20 mm	Min Temperature Operating	-10°C
Axial Load	≤ 2.0 N	Backlash	≤ 3.0 °	Relative Humidity Operating	20% to 85%
Press Fit Force - Max	≤ 4.9 N	Bearing	Sleeve	Characteristics and Specifications at 22°C	

GMP offers Planetary & Spur Gearboxes/Gearmotors from 6 mm diameter to 90 mm. Motor technologies include: Iron Core, Coreless, and Slotless Brushless DC Motors, Two Ø Stepper Motors, Integral 3 Channel Optical & Magnetic encoders, some with Low Power/Voltage versions. 3 - 20 Volts - 5mA Reference.

Lubrication. Bearings. Brushless, Coreless and Iron Core DC Motors.

\* Rotational Sense of Gearbox Output Shaft to Motor Shaft

**Global Motion Products**  
 Distributed by:  
 Precision Motion Distributors: (925) 803-9565  
 Technical Support: (760) 451-2723  
<http://www.gmpwebsite.com> Email: [info@gmpwebsite.com](mailto:info@gmpwebsite.com)

Manufactured under a Certified ISO 9001 Quality System and ISO 14001 Environmental Management System.

RoHS Compliant

B - August 2012

Specifications Subject to change without notice