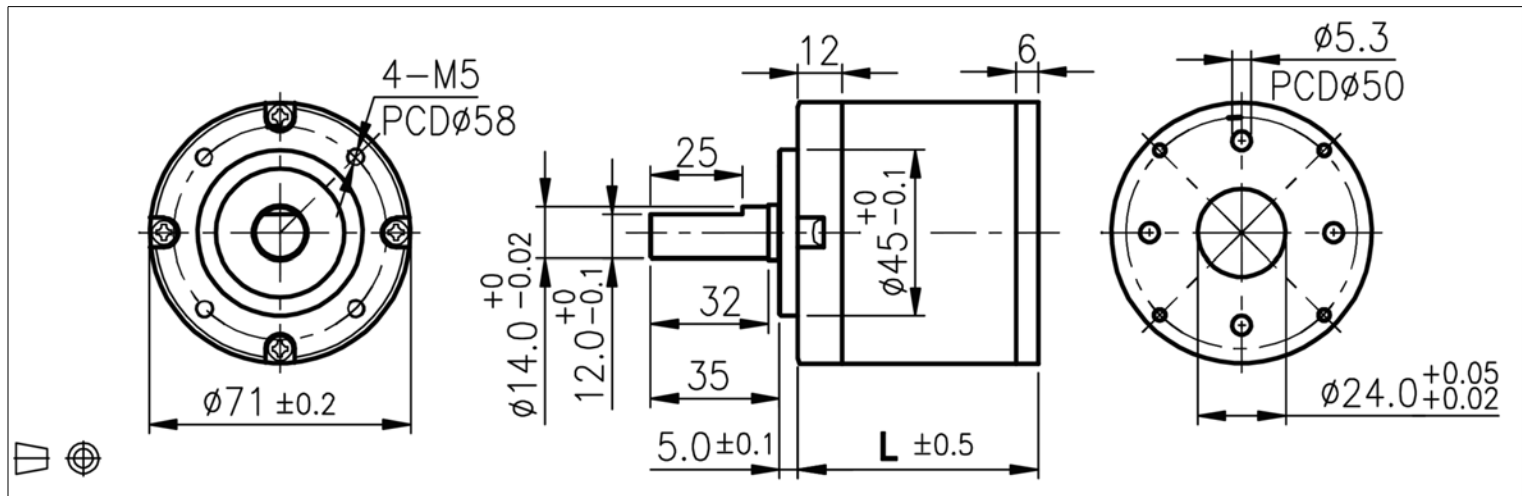


Planetary Gearbox - 71 mm Ø



Steel Housing / Hobbed Sun Gear - Ball Bearings

Global Motion Products



Not to Scale - Dimensions in millimeters (mm)

Ratio	Efficiency %	Continuous Torque Nm	Continuous Torque oz-in	Length L mm	Mass grams	Direction of Rotation*	Order Part Number
3.50:1	80 %	1.47 Nm	208.3 oz-in	49.3	900.0	Same	P710004AB00
13.22:1	70 %	6.86 Nm	972.1 oz-in	65.8	1,230.0	Same	P710013AB00
16.00:1	70 %	6.86 Nm	972.1 oz-in	65.8	1,230.0	Same	P710016AB00
19.81:1	70 %	6.86 Nm	972.1 oz-in	65.8	1,230.0	Same	P710020AB00
49.95:1	60 %	12.26 Nm	1,735.9 oz-in	82.3	1,560.0	Same	P710050AB00
60.44:1	60 %	12.26 Nm	1,735.9 oz-in	82.3	1,560.0	Same	P710060AB00
74.84:1	60 %	12.26 Nm	1,735.9 oz-in	82.3	1,560.0	Same	P710075AB00
90.56:1	60 %	12.26 Nm	1,735.9 oz-in	82.3	1,560.0	Same	P710091AB00
101.77:1	60 %	12.26 Nm	1,735.9 oz-in	82.3	1,560.0	Same	P710102AB00
126.00:1	60 %	12.26 Nm	1,735.9 oz-in	82.3	1,560.0	Same	P710126AB00
188.70:1	50 %	12.26 Nm	1,735.9 oz-in	98.8	1,900.0	Same	P710189AB00
242.07:1	50 %	12.26 Nm	1,735.9 oz-in	98.8	1,900.0	Same	P710242AB00
299.67:1	50 %	12.26 Nm	1,735.9 oz-in	98.8	1,900.0	Same	P710300AB00
362.67:1	50 %	12.26 Nm	1,735.9 oz-in	98.8	1,900.0	Same	P710363AB00

Radial Load Rating ≤ 245.2 N
 Radial Load Distance 10 mm
 Axial Load ≤ 98.1 N
 Press Fit Force - Max ≤ 490.3 N

Radial Play ≤ 0.08 mm
 Axial Play ≤ 0.40 mm
 Backlash ≤ 3.0 °
 Bearing Ball

Max Temperature Operating 60°C
 Min Temperature Operating -10°C
 Relative Humidity Operating 20% to 85%
 Characteristics and Specifications at 22°C

The P71 is available as a complete gearmotor with iron core, coreless, or brushless dc motors, and optional magnetic and optical encoders.

Lubrication, Gear Materials and Gear Heat Treatment. Coreless, Brushless and Iron Core DC Motors with encoder options. Client specified gear/pulley/sprocket mounting to gearbox output shaft.

It is also offered without motor with input pinion and adapter plate supplied.

* Rotational Sense of Gearbox Output Shaft to Motor Shaft

Global Motion Products
 Distributed by:
 Precision Motion Distributors: (925) 803-9565
 Technical Support: (760) 451-2723
<http://www.gmpwebsite.com> Email: info@gmpwebsite.com

Manufactured under a Certified ISO 9001:2008
 Quality System and ISO 14001:2004
 Environmental Management System.

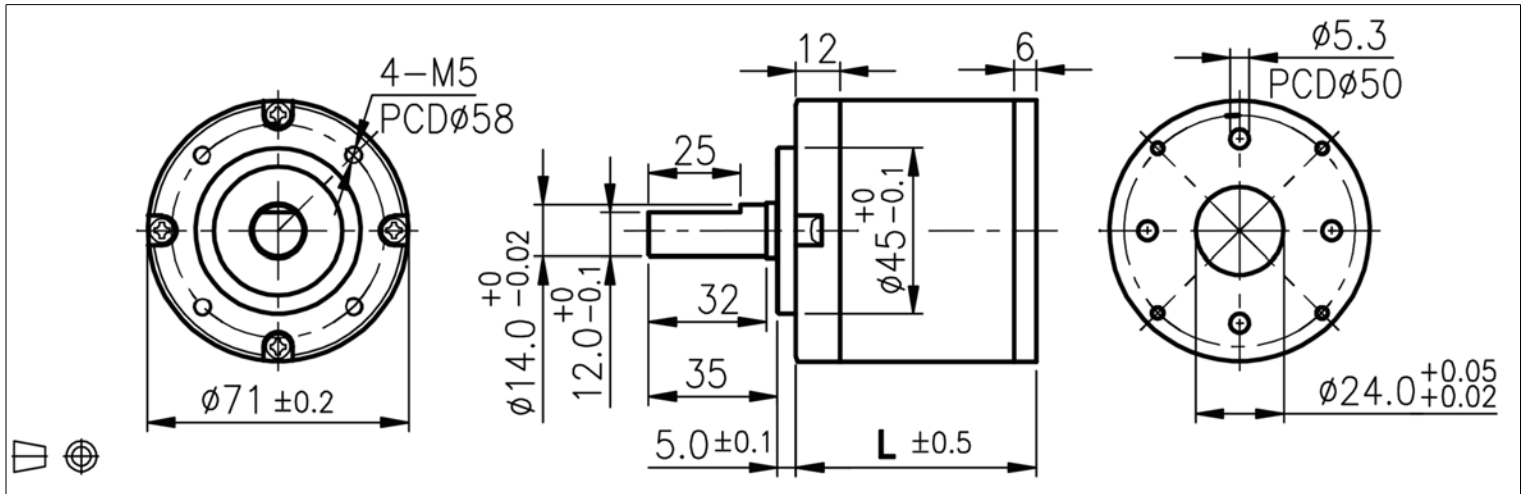
RoHS Compliant

Planetary Gearbox - 71 mm Ø



Steel Housing / Hobbed Sun Gear - Ball Bearings

Global Motion Products



Not to Scale - Dimensions in millimeters (mm)

Ratio	Efficiency %	Continuous Torque Nm	Continuous Torque oz-in	Length L mm	Mass grams	Direction of Rotation*	Order Part Number
413.98:1	50 %	12.26 Nm	1,735.9 oz-in	98.8	1,900.0	Same	P710414AB00
493.19:1	50 %	12.26 Nm	1,735.9 oz-in	98.8	1,900.0	Same	P710493AB00
543.35:1	50 %	12.26 Nm	1,735.9 oz-in	98.8	1,900.0	Same	P710543AB00
610.62:1	50 %	12.26 Nm	1,735.9 oz-in	98.8	1,900.0	Same	P710611AB00

Radial Load Rating ≤ 245.2 N
 Radial Load Distance 10 mm
 Axial Load ≤ 98.1 N
 Press Fit Force - Max ≤ 490.3 N

Radial Play ≤ 0.08 mm
 Axial Play ≤ 0.40 mm
 Backlash $\leq 3.0^\circ$
 Bearing Ball

Max Temperature Operating 60°C
 Min Temperature Operating -10°C
 Relative Humidity Operating 20% to 85%
 Characteristics and Specifications at 22°C

The P71 is available as a complete gearmotor with iron core, coreless, or brushless dc motors, and optional magnetic and optical encoders.

Lubrication, Gear Materials and Gear Heat Treatment. Coreless, Brushless and Iron Core DC Motors with encoder options. Client specified gear/pulley/sprocket mounting to gearbox output shaft.

It is also offered without motor with input pinion and adapter plate supplied.

* Rotational Sense of Gearbox Output Shaft to Motor Shaft

Global Motion Products

Distributed by:

Precision Motion Distributors: (925) 803-9565

Technical Support: (760) 451-2723

<http://www.gmpwebsite.com> Email: info@gmpwebsite.com

Manufactured under a Certified ISO 9001:2008
 Quality System and ISO 14001:2004
 Environmental Management System.

RoHS Compliant

A - October 2014

Specifications Subject to change without notice